

THE FULLY AUTOMATIC CRITICAL POINT DRYER

AUTOSAMDRI®-815, Series A



tousimis

The Fully Automatic **Autosamdri®-815, Series A*** was developed by Dr. A. J. Tousimis and our instrument design team. The **Autosamdri®-815, Series A*** is a fully Automatic Critical Point Dryer that works "with you and for you". Smooth process operation and precise control insuring reproducible results distinguish the Fully Automatic **Autosamdri®-815, Series A**.

Autosamdri®-815, Series A

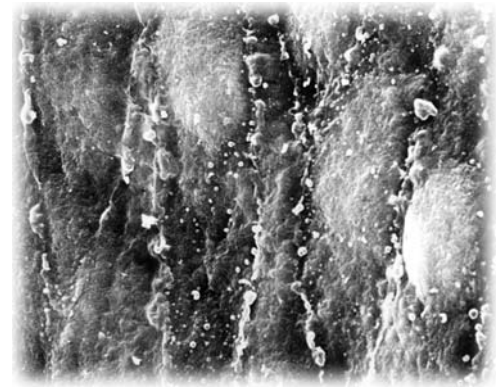
(THE FULLY AUTOMATIC CRITICAL POINT DRYER)

Catalog # 8779B



FEATURES

- Simplify CPD processing via microprocessor controller delivers Automatic processing and reproducibility of results.*
- Vernier handles on all metering valves allow for reproducible settings.
- Excellent choice for multi-user sites.
- Indicator LEDs signal every mode of operation at a glance.
- Internal filtration* protect samples and valves down to 0.5µm.
- EZ top loading process chamber.
- Under-lit chamber with viewing port aids visualization of chamber status.
- Internal surfaces inert to LCO₂ and ultra-pure alcohols.
- Advanced solid state reliable electronics.
- Integrated temperature control.
- Fast adiabatic chamber cooling* with CO₂.
- Static pressure control module for automatic pressure stability.
- Tough, solvent resistant cabinet.
- All electronic and other components meet UL, CE and/or U.S. Military Specifications.
- Optional SOTER™ Condenser* can be attached to capture waste alcohol and deaden PURGE exhaust noise.



SEM of the internal surface of the carotid (human) artery. This samdried (critical point dried) sample shows not only surface membrane details but also endothelial cell boundaries and their nuclei.

SPECIFICATIONS

- Cabinet: 14"(W)x 10.25"(H) x 21.50"(L)
35.6cm(W) x 26.0cm(H) x 54.6cm (L)
- System Set-Up Area Required: 20"(W) x 30"(D) [51cm(W) x 76cm(D)]
- System Set-Up Area Required with SOTER™ Condenser: 36"(W) x 30"(D)
[92cm(W) x 76cm(D)]
- Chamber size: 1.25" I.D. x 1.25" Depth
- Temperature gauge range: -30°C to 60°C, Pressure gauge range: 0 to 2,000 psi.
- 120V / 50-60Hz (Other voltage units also available - Please inquire).



SOTER™ Condenser* (Cat# 8777)
Quietly captures exhaust alcohol.

- Flexible High-Pressure braided stainless steel inert Teflon® lined LCO₂ Supply Hose, 5ft (approximate 1.5m) long.
- External LCO₂ filtration removes water/oil and particulates down to 0.5µm. Filter is conveniently pre-installed onto the LCO₂ High Pressure Hose.
- Static free exhaust tubing for the PURGE/VENT/BLEED and COOL exhaust outlets.
- Flow Meter supplied allows precise periodic BLEED exhaust rate flow control.
- Spare chamber O-ring (2), chamber lamps (2), and 5A slo-blow fuses (2).
- User Manual and Check-Out data sheet.
- Free lifetime technical support.
- 2 year warranty on all parts and labor.

* Most Samdri® Autosamdri® features U.S. patented (# 6,493,964) or patent pending.
Note: Actual delivered model or accessories may vary slightly, as advancements are being constantly applied.

OPTIONAL SOTER™ CONDENSER (#8777)



Note: Overall System Set-Up Area Requirement with optional SOTER™ Condenser:
36" (W) x 30" (D)
92cm (W) x 76cm (D)



8777 SOTER™ Condenser

SOTER™ Condenser capable of quietly separating alcohol(s) from CO₂ exhaust discharge of your SAMDRI® chamber. Standard 120V grounded power source required. Comes complete with 10' static free 1/4" ID exhaust line, insulated exhaust connect from SAMDRI®, and clear drain line tubing.



Optional SOTER™ Condenser Shown Connected to Autosamdri®-815, Series A

* Most Samdri® Autosamdri® features U.S. patented (# 6,493,964) or patent pending.

Note: Actual delivered model or accessories may vary slightly, as advancements are being constantly applied.

OPTIONAL ACCESSORIES

Catalog #	Description
8777	SOTER™ CONDENSER
8760-01	Knurl Nut
8760-40	5 AMP Fuse
8770-10	Lamp, 120V/60Hz volt
8770-32	High Pressure Hose, 5 ft
8770-33	High Pressure Hose, 10 ft
8770-HPS	High Pressure Hose, Custom Length Up To 10m (33ft)
8770-45	Flow Meter - Use with any 1.25" dia. Samdri® Chamber (20 SCFH)
8770-50	Chamber Lid
8784	LCO ₂ Filter Housing for 8784A Filter Element
8784A	Replacement LCO ₂ Filter Element for 8784 Filter Housing
8784B	O-Ring for 8784 Filter Housing Seal
8784-05	Gasket for LCO ₂ Tank Connect
8770-83	Internal 0.5µm Brass Particulate Line Filter
8770-51	O-Ring for 1.25" Diameter Autosamdri® Chamber
8770-53	Power Cable, three prong, 120V/60Hz
8770-54	LCO ₂ Tank Scale, w/ Remote LCD Display (400lb capacity)
8770-55	LCO ₂ Tank Heater
8770-56	Step-Down Transformer, 220V → 110V
8770-57	Step-Up Transformer, 100V → 120V, 50/60hz
8761	Grid Holder, holds 12 grids.
8762	12 Sample Holder, each compartment measures 7.5 (dia.) x 6mm (ht.)
8763	24 Sample Holder, each compartment measures 4.5 (dia.) x 6mm (ht.)
8764	4 Sample Holder, each compartment measures 9 (dia.) x 16mm (ht.)
8766	Cover Slip Holder, for 9mm to 13mm diameter Glass Cover Slips
8766-01	Washer for Glass Slip Holder (for use with #8766)
8766-02	Stainless Steel Screens for Cover Slip Holder (for use with #8766)
8767	Cover Slip Holder, for 16mm to 22mm diameter Glass Cover Slips
8767-01	Washer for Glass Slip Holder (for use with #8767)
8767-02	Stainless Steel Screens for Cover Slip Holder (for use with #8767)

Visit tousimis.com for more information.

* Most Samdri® Autosamdri® features U.S. patented (# 6,493,964) or patent pending.

Note: Actual delivered model or accessories may vary slightly, as advancements are being constantly applied.